

GasPro™ TEM-717125

1.125" C-seal Sintered
316L Media Surface Mount
Sandwich Filter



GasPro™ TEM-717125 is a unique filter for surface mount gas delivery systems, designed to be placed under another component. Placing under a valve or regulator eliminates one substrate and effectively shortens the system and reduces its cost.

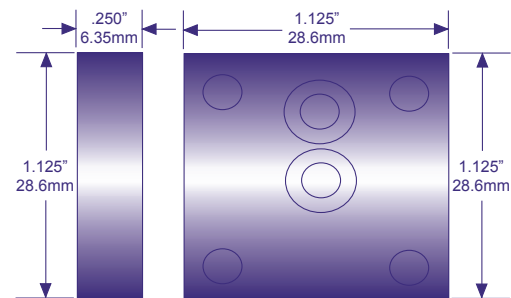
Specifications

- **Filtration rating**
Efficient 3 nm particle retention.
- **Maximum operating temperature**
200°C (392°F) in inert gas
- **Maximum operating pressure**
750 PSI at 250°F (51.7 bar at 121.1°C)

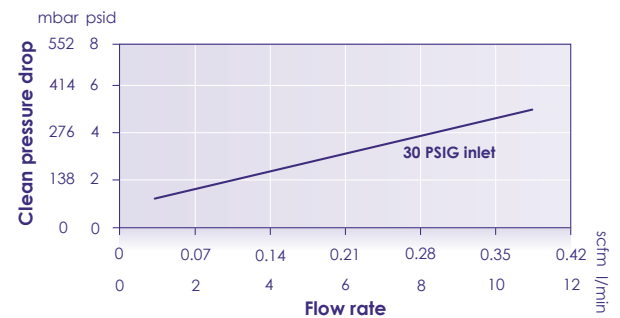
Features

- **All welded sintered 316L stainless hardware**
Good corrosion resistance; excellent bake-out characteristics for fast dry downs and in-line qualification.
- **Electro-polished 316L housing**
The filter assemblies have a <10Ra electro-polished 316L stainless steel housing to prevent corrosion and particle formation.
- **Out of package cleanliness**
Our GasPro™ TEM-717125 filters are cleaned and packaged in a cleanroom with organic free handling for out-of-package, particle free, and chemical free cleanliness. Final assembly is purged with filtered nitrogen for initial cleanliness. Additional preconditioning is optional.
- **100% helium leak tested**
All units are tested to 1×10^{-9} atm cc/second.

Dimensions



Gas flow rate vs Pressure drop



Part Numbers and Ordering Information

Part number	Inlet/outlet fittings	Filter media/hardware
TEM-717125	1.125" C-Seal	Sintered 316L / 316L