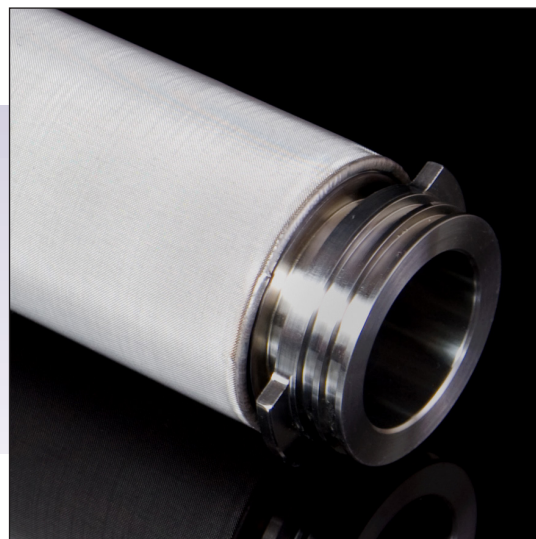


Sinterflo® MC

Cylindrical Metal Mesh Composite Filter Elements



Multi-layered, diffusion-bonded stainless steel mesh is available in 316/316L and other alloys. This precision mesh, also known as porous plate, is available in a range of pore sizes from 5-100µm.

Sinterflo® MC is particularly suited to demanding applications where high operating temperatures of up to 540°C (1,000°F), increased chemical or high abrasion resistance is essential.

This material is easily custom engineered to meet required specifications of materials, strength, flow requirements, thickness, micron rating and environment.

Primarily made from 316/316L stainless steel, Sinterflo® MC is also available in Inconel®, Hastelloy® and Monel® materials for use in the most aggressive environments

Features and Benefits

- A superior, mechanically strong structure
- Fabricated shapes without expensive support structures or joining strips
- Can be reused as the structure allows repeated cleaning, providing an economical choice.
- Non-shedding media that provides resistance to mechanical abrasion
- Easily custom-engineered to meet required specifications of materials, strength, flow requirements, thickness, micron rating and environment
- Depending on atmospheric conditions, it can be used in temperatures up to 1004°F (540°C), with intermittent operating peaks up to 1202°F (650°C)
- Resistance to most chemicals.

Ordering Information

Sinterflo Table 1 - Table 2 Table 3 - Table 4 - Table 5 - Table 6 Table 7 Table 8

Table 1 Media Type

MC	Sinterflo® MC (mesh composite)
----	--------------------------------

Table 2 End Fitting

226	226 fitting
222	222 fitting
DOE	Double open ended fitting
NP1	1" NPT
NP5	1.5" NPT
NP2	2" NPT
BS1	1" BSP taper
BS4	1.25" BSP taper
BS5	1.5" BSP taper
BS2	2" BSP taper

Table 3 Cartridge Type

C	Cylindrical
---	-------------

Note: Other non-standard lengths and end pin options are available on request.

Table 4 Micron Rating

0005	5µm
0010	10µm
0015	15µm
0020	20µm
0040	40µm
0075	75µm
0100	100µm

Note: Other ratings are available on request.

Table 5 Cartridge Length

05	5" (125mm)
10	10" (250mm)
20	20" (498mm)
30	30" (745mm)
40	40" (1012mm)

Table 6 Seal Material

E	EPDM
N	Nitrile
S	Silicone
P	PTFE (DOE only)
V	Viton®
F	FEP encap. Viton® (222/226 only)
T	FEP encap. Silicone (222/226 only)
Y	FEP encap. EPDM (222/226 only)
C	Chemraz
X	No seal supplied

Table 7 Guard/Support Option

N	None
---	------

Table 8 Fin Option

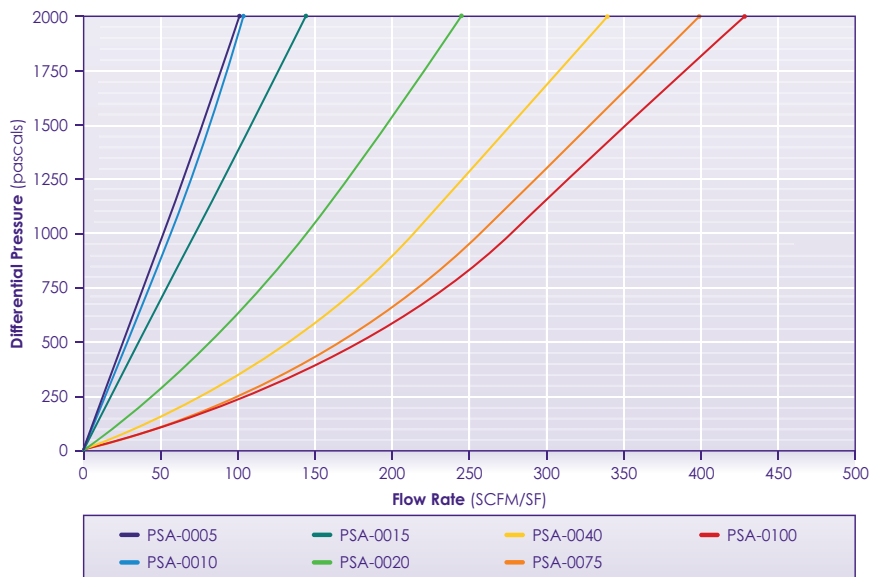
F	Fin (226/222 only)
N	No fin

Specifications

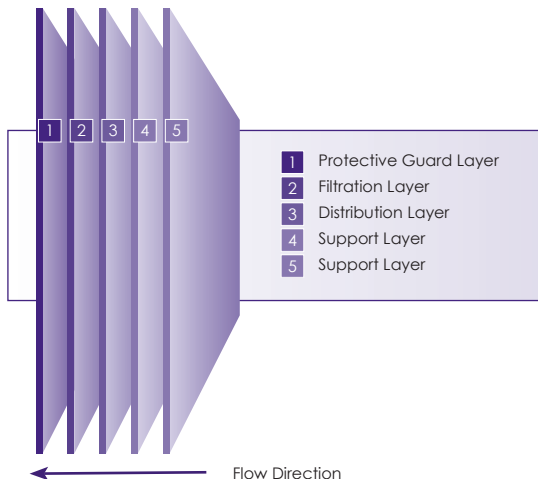
Standard Filter Plate Grades

Grade	Nominal Rating (microns)	Partical Control Mesh (wires per inch)	Nominal Thickness (inch (mm))
PSA-0005	5	325 x 2300	0.066" (1.68mm)
PSA-0010	10	200 x 1400	0.066" (1.68mm)
PSA-0015	15	165 x 1400	0.066" (1.68mm)
PSA-0020	20	165 x 800	0.066" (1.68mm)
PSA-0040	40	325 x 325	0.066" (1.68mm)
PSA-0075	75	250 x 250	0.066" (1.68mm)
PSA-0100	100	150 x 150	0.066" (1.68mm)

Flow Versus Pressure Drop



Sinterflo® MC Filter Configuration



PFG646/Rev4:Oct25